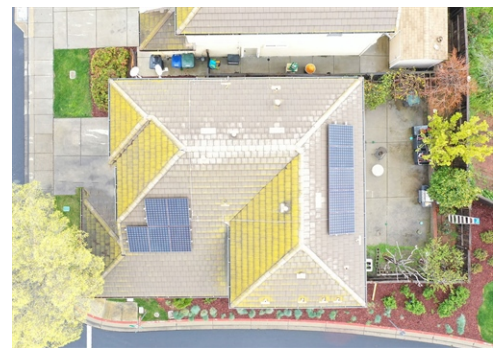


Welcome Home



\$ 599,999



1621 Enterprise Cir. , Pittsburg, CA 94565

- » Beds: 4 | Baths: 2 Full, 2 Half, 1 Three-Quarter
- » MLS #: 41023022
- » Single Family | 1,867 ft² | Lot: 3,997 ft²
- » More Info: 1621EnterpriseCir.com



Elizabeth Partida
(925) 698-4389
elizabethpartida@comcast.net
<http://www.elizabethpartida.exprealty.com>



eXp Realty of California, Inc.
9040 Brentwood Blvd.
Suite A
Brentwood, CA 94513
(925) 698-4389

This lovely 4 bedroom, 2.5 bath home situated on a large corner lot in the highly sought after gated Heritage Point community! The interior of the home is spacious and features an open floor plan, making it perfect for entertaining guests. The living room and dining area flow seamlessly into the kitchen. The bedrooms are located on the second level, providing privacy and separation from the living areas. The spacious owner's suite includes an en-suite bathroom, as well as a walk-in closet. Reap the benefits of the electric solar system. The property also features a good size backyard, perfect for outdoor activities and relaxing. The backyard is fully fenced, providing privacy and security for children or pets. Conveniently located near bart, restaurants, downtown, shopping centers, schools, and parks.

